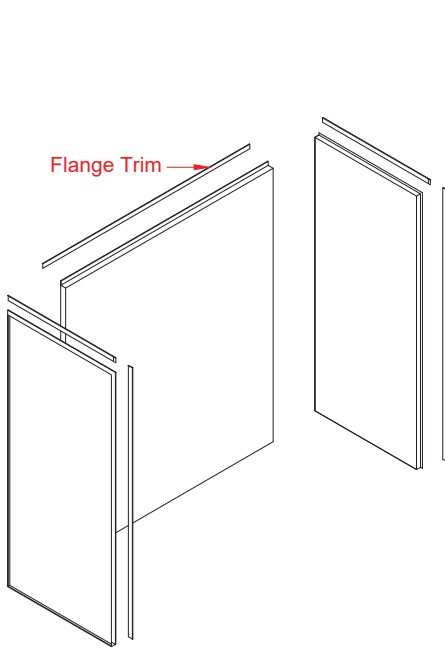


# MODEL: 3SWSU6028 RH

# REMODELER

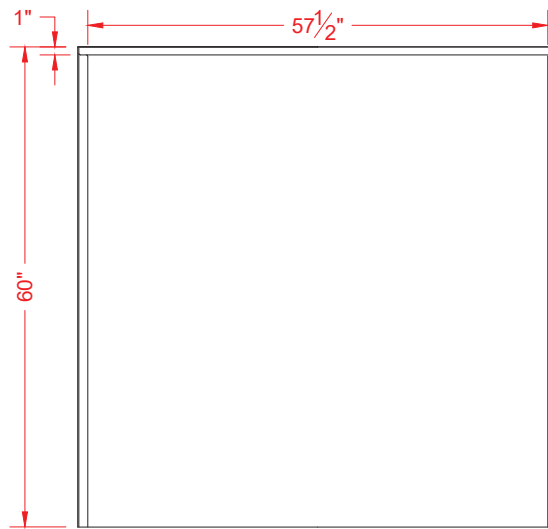
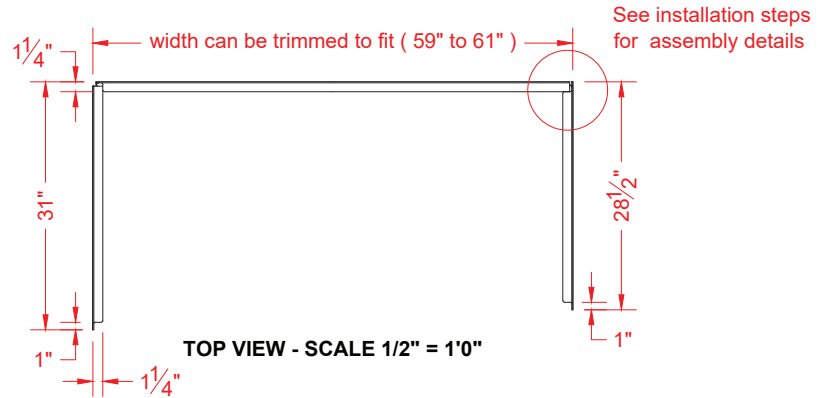
## Universal Three Piece Tub Surround



PERSPECTIVE VIEW - N.T.S.

### Features:

- Gelcoat/composite three-piece tub surround
- Smooth wall finish, white (standard)
- Integral full wood backing for strength and unlimited accessory placement
- Designed to allow cutting of the back wall to fit framing pocket width variations with a patented spring clip system to interlock the corners.



### PRODUCT SPECIFICATIONS:

-Multi-piece universal wall surround system for bathtubs shall be of gelcoat / fiberglass construction with integral full plywood backing. Backwall width shall be adjustable by trimming one end. Corners interlock through a system of spring clips, that lock with construction adhesive. C.S.I. FORMAT SPECIFICATION TEXT AVAILABLE

### CODES:

Designed and manufactured in compliance with the following standards and codes:  
 -CSA B45.5 -11 / IAPMO Z124-11  
 Plastic Plumbing Fixtures

### PRODUCT INFORMATION:

-Colors: White as standard, Almond optional  
 -Also available with sprayable solid surface in many colors

### OPTIONAL ACCESSORIES:

#### INSTALLED BY OTHERS:

- Grab bar
- Soap dish
- Mixing valve, pressure-balancing, lever handle, pre-plumbed tree to supply elbow
- Curtain rod brackets



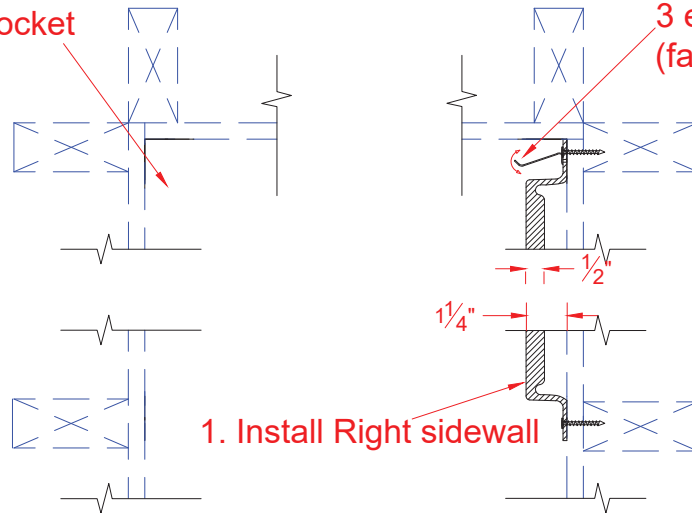
Architectural Products for Barrier Free Living

www.barrierfree.org (877) 717-7027

We reserve the right to make revisions without notice in the design of fixtures or in packaging unless this right has specifically been waived at the time the order is accepted.

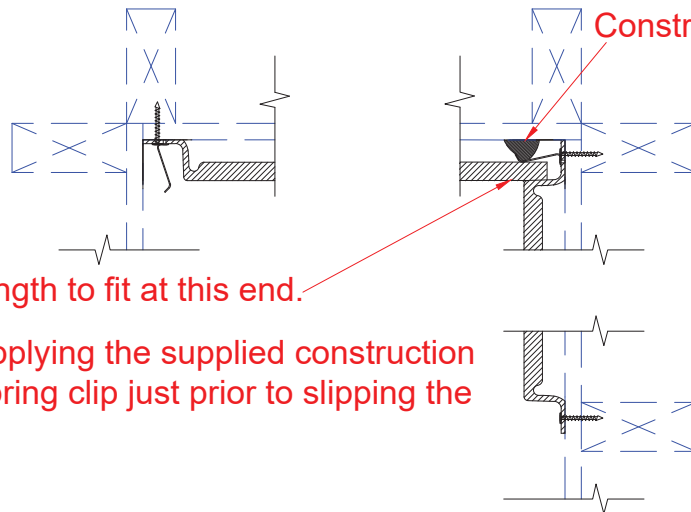
# MODEL: 3SWSU6028RH Section View of Installation Steps.

Framing pocket



3 ea Spring clips  
(factory installed)

1. Install Right sidewall

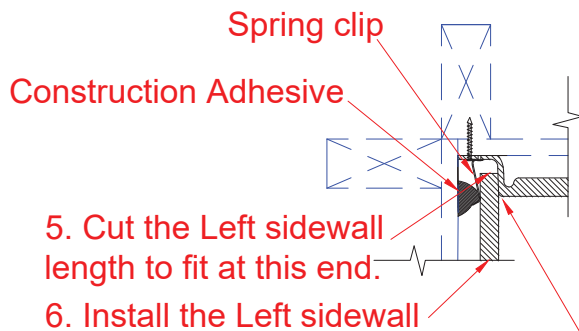


Construction Adhesive

2. Cut the Back wall length to fit at this end.

3. "Lock" the joint by applying the supplied construction adhesive behind the spring clip just prior to slipping the back wall in place.

4. Install the back wall.

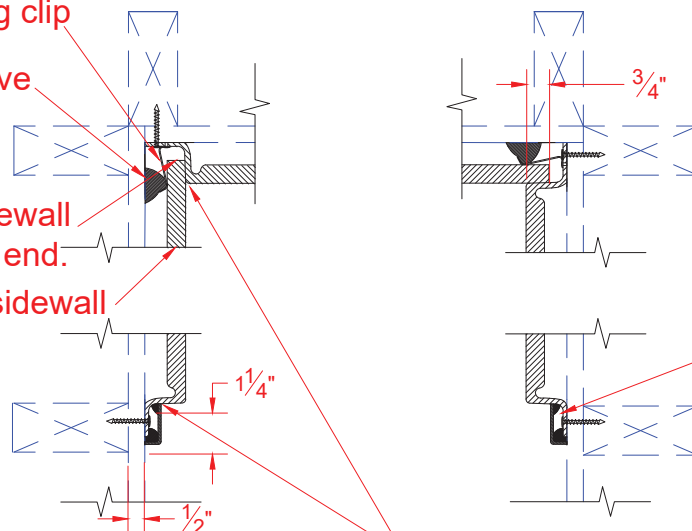


Spring clip

Construction Adhesive

5. Cut the Left sidewall length to fit at this end.

6. Install the Left sidewall



7. Install Flange Trim with the supplied construction adhesive.

8. Caulk all joints between the panels, the flange trim and to the tub deck.