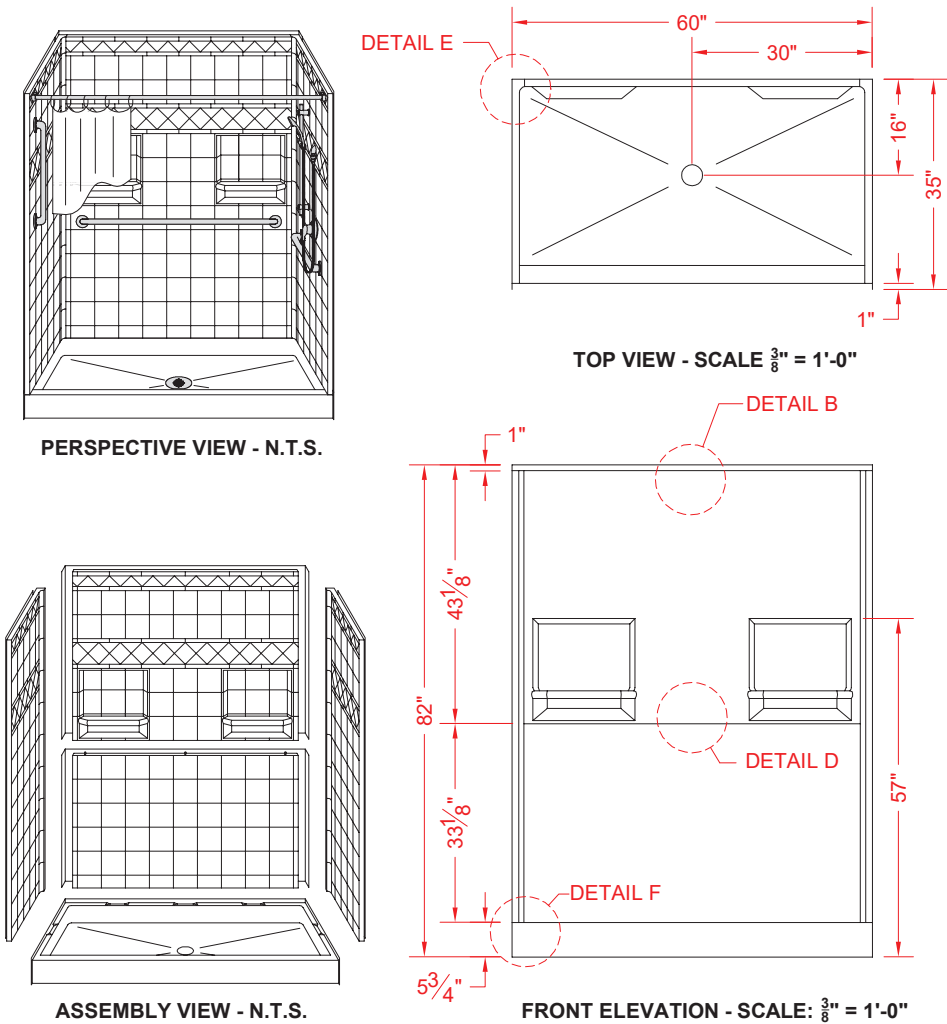


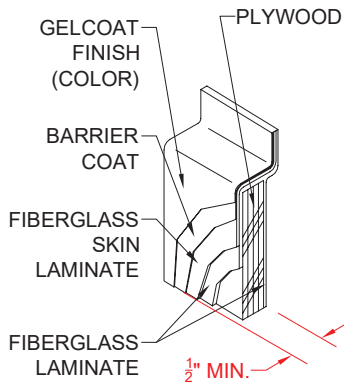
ALL ACCESSORIES OPTIONAL



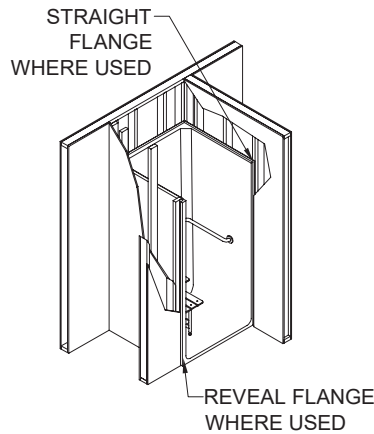
- Features:**
- Molded, 5 piece gelcoat/fiberglass shower module
 - "Diamond Tile" wall finish, white (standard)
 - Integral full wood backing for strength and unlimited accessory placement

* - SEE BACK FOR DETAILS

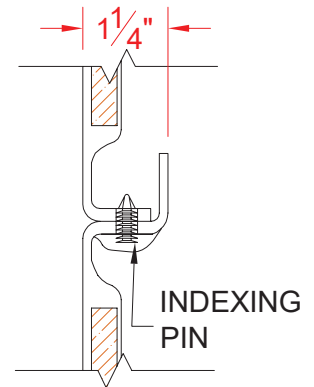
<p>PRODUCT SPECIFICATIONS:</p> <p>-Multi piece shower module shall be constructed of gelcoat/fiberglass with full integral plywood backing</p> <p>-Rough-In: Stud opening +1/4" -0" Nominal Dimensions.</p> <p>C.S.I. FORMAT SPECIFICATION TEXT AVAILABLE</p>		
<p>PRODUCT INFORMATION:</p> <p>-Accessories: Polished chrome/satin stainless standard, others available.</p> <p>-Colors: White as standard, others to match any major fixture manufacturer, also available with sprayable solid surface in many colors</p> <p>-Custom curb heights, other than shown, are available (between min. and max.)</p>	<p>ACCESSORIES:</p> <p><u>INSTALLED BY OTHERS:</u></p> <ul style="list-style-type: none">-Grab bar-Mixing valve, pressure balanced, lever handle, preplumbed tree to supply elbow-Soap dish-Curtain and rod-Caulkless drain	<p>CODES:</p> <p><u>Designed and manufactured in compliance with the following standards and codes:</u></p> <ul style="list-style-type: none">-A.N.S.I. Z124.2 Standards for Plastic Showers-I.P.C. International Plumbing Code-U.P.C. Uniform Plumbing Code
<div><div><div>BARRIER FREE ARCHITECTURALS INC. <small>Architectural Products for Barrier Free Living</small></div></div><div><div><small>We reserve the right to make revisions without notice in the design of fixtures or in packaging unless this right has specifically been waived at the time the order is accepted.</small></div></div></div> <div><div>www.barrierfree.org</div><div>(877) 717-7027</div></div>		<p>NOTICE OF LIMITATION:</p>



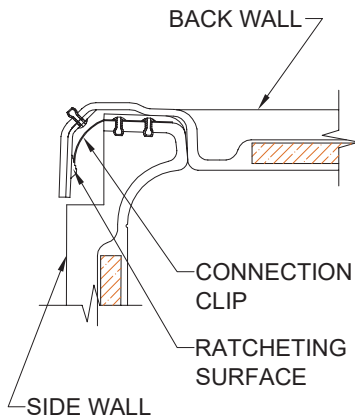
DETAIL B - SCALE: 3" = 1'-0"
WALL SECTION DETAIL



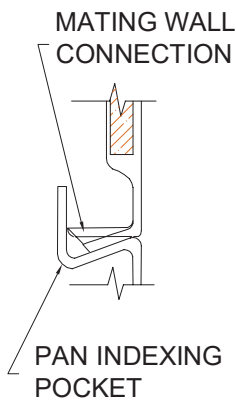
DETAIL C - SCALE: NTS
TYPICAL FRAMING



DETAIL D - SCALE: 3" = 1'-0"
BACKWALL JOINT DETAIL



DETAIL E - SCALE: NTS
WALL JOINT DETAIL



DETAIL F - SCALE: NTS
PAN JOINT DETAIL