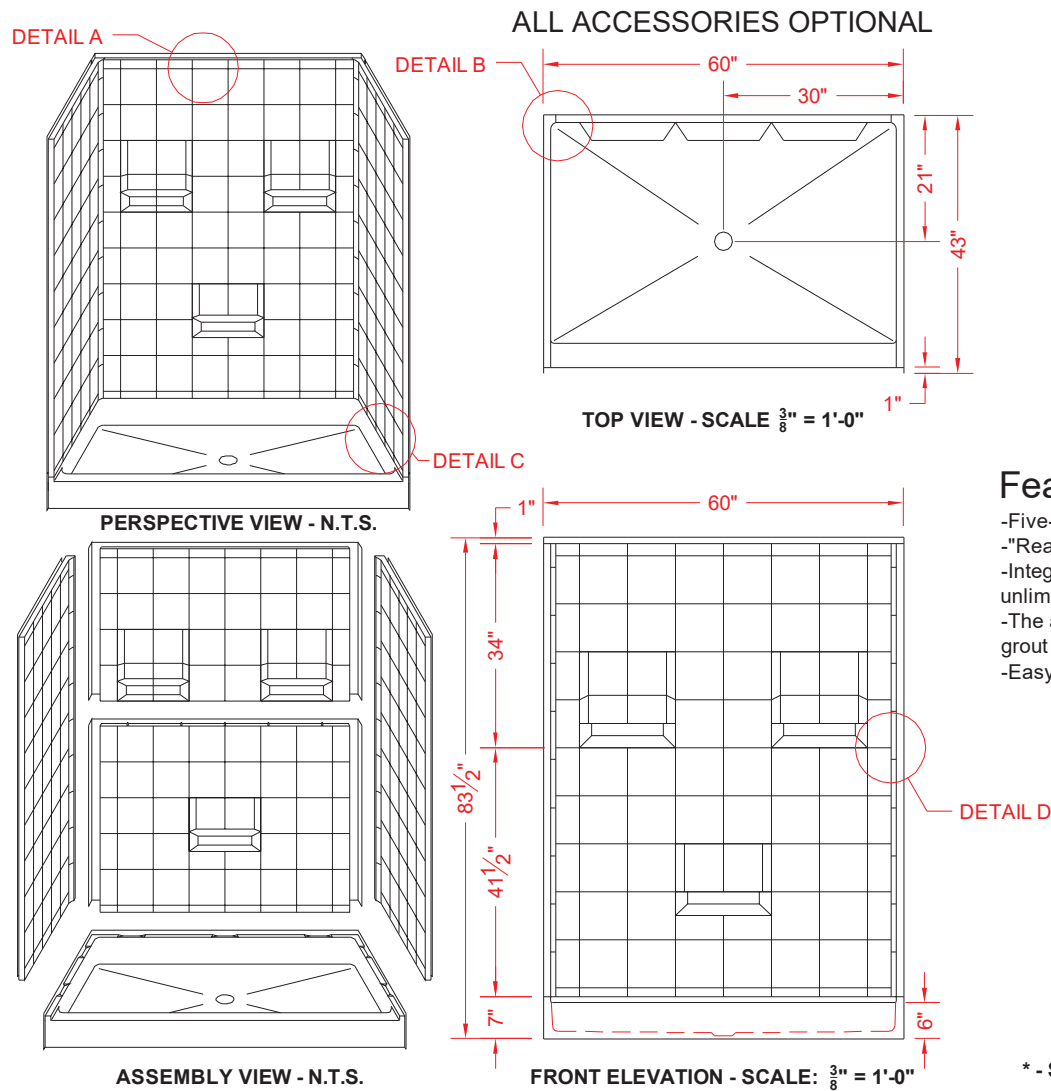


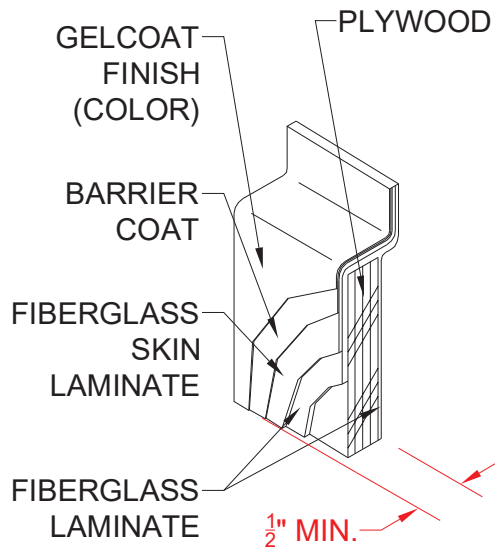
MODEL: 5LES6042

Remodeler

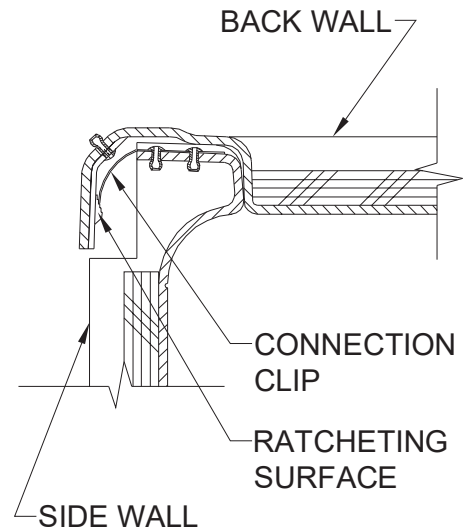


- Features:
- Five-piece gelcoat/fiberglass shower module
 - "Real Tile" wall finish, white (standard)
 - Integral full wood backing for strength and unlimited accessory placement
 - The authentic look of ceramic tile without the grout
 - Easy in-place assembly from the front

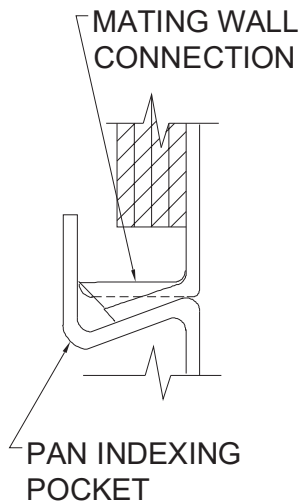
<p>PRODUCT SPECIFICATIONS:</p> <p>-Five-piece tub/shower module shall be constructed of gelcoat/fiberglass with full integral plywood backing in the walls</p> <p>-Rough-In: Stud opening +1/4" -0" Nominal Dimensions.</p> <p>C.S.I. FORMAT SPECIFICATION TEXT AVAILABLE</p>		
<p>PRODUCT INFORMATION:</p> <p>-Accessories: Factory installed, unless prone to damage during installation/shipping. Polished chrome/satin stainless standard, others available.</p> <p>-Colors: White as standard, others to match any major fixture manufacturer, also available with sprayable solid surface in many colors</p>	<p>ACCESSORIES:</p> <p><u>INSTALLED BY OTHERS:</u></p> <p>-Grab bar</p> <p>-Seat, folding</p> <p>-Mixing valve, pressure balanced, lever handle, preplumbed tree to supply elbow</p> <p>-Curtain and rod</p>	<p>CODES:</p> <p>Designed and manufactured in compliance with the following standards and codes:</p> <p>-A.N.S.I. Z1241.2 Standards for plastic Bathtubs and Showers</p> <p>-I.P.C. International Plumbing Code</p> <p>-U.P.C. Uniform Plumbing Code</p>
		<p>NOTICE OF LIMITATION:</p>
<div><div><p>BARRIER FREE ARCHITECTURALS INC.</p><p>Architectural Products for Barrier Free Living</p><p>www.barrierfree.org (877) 717-7027</p></div><div><p>We reserve the right to make revisions without notice in the design of fixtures or in packaging unless this right has specifically been waived at the time the order is accepted.</p></div></div>		



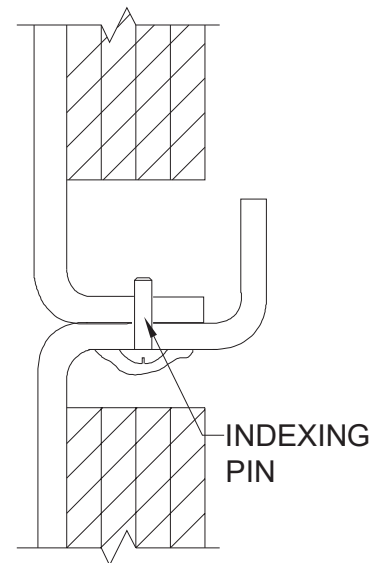
DETAIL A - SCALE N.T.S.
WALL SECTION DETAIL



DETAIL B - SCALE N.T.S.
WALL JOINT DETAIL



DETAIL C - SCALE N.T.S.
WALL / PAN JOINT DETAIL



DETAIL D - SCALE N.T.S.
BACK WALL JOINT DETAIL