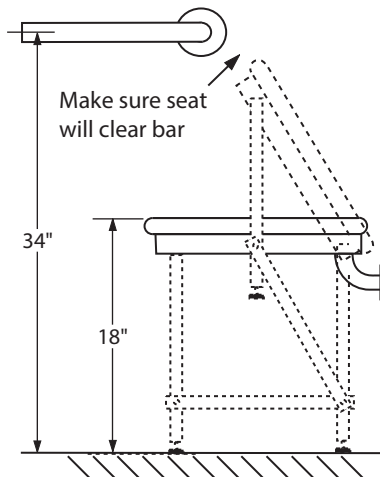
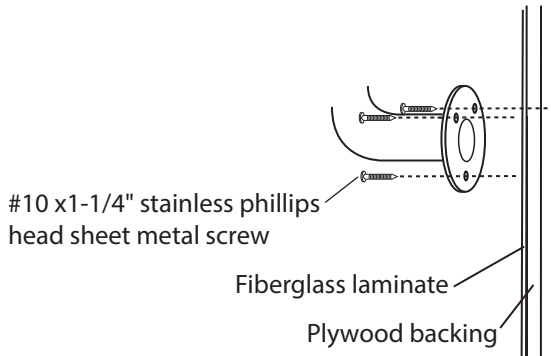
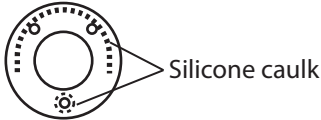


## Seat and Grab Bar

### SEAT SWD & GRAB



Folding Seat with swing-down legs

### Seat/grab bar Installation instructions

In some cases, the seat or grab bar location is pre-drilled, just through the first layer of fiberglass. In that case you just need to apply silicone as shown and use the supplied fastener and attach. DO NOT drill any further into the wood.

### If no seat or grab bar position is marked:

1. Position the seat at 18" (grab bar at 34") above the floor and so that it will not swing up into the grab bar.
2. Transfer the flange and bracket holes to the wall with a pencil.
3. Make sure there is plywood backing where you are attaching the seat or bar by testing as you BARELY drill through the fiberglass with a 7/32" bit and see wood shavings.
4. On the flanges, apply a half-circle of silicone caulk above the two top screws and around the lower hole.
5. Install the seat/bar with the screws, making sure you feel the resistance of the plywood as the screws go in.
6. Adjust the feet to ensure that all four are touching the floor and then tighten the jam nuts. Failure to do so may result in injuries to the user and/or damage to the shower not covered under warranty.

DO NOT pre-drill all the way into the wood.

GRAB BARS, if you do not hit wood for one of the screws out of the three (per flange), drill an additional test hole in the flange closer to the other holes where you will likely find wood or use a toggle bolt. If there is no wood, read on.

Fold-down SEATS without swing-down legs may NOT be installed unless the flanges have at least one machine screw with a Tee-nut in wood backing. If you do not have wood backing for a fastener, either 2x6 blocking between the studs is required or a seat with swing-down legs will be needed. These are available from Best Bath Systems.

If there appears to be no wood backing, you can install grab bars and seats (with swing-down legs only) using the "WingIt" blind fastening system (available from Best Bath Systems). NOTE: Loads in excess of 250 lbs. always require a seat with swing-down legs.

#### Tools needed:

Tape measure  
Marker or pencil  
Screw gun  
7/32" bit  
#2 Phillips bit  
Caulk gun  
(5/16" socket)  
(1/4" bit)

#### Supplies needed:

1 ea seat  
7 ea Phillips head  
Stainless steel sheet  
Metal screws  
#10x1-1/4"  
(2 ea Cap screw  
#10-32 x 1-1/4"S.S.)  
(2 ea Tee-nuts  
#10-32)  
Silicone caulk