

TOOLS/SUPPLIES NEEDED

Pencil
Scissors or Razor Knife
Silicone & Gun (OPTIONAL)
Straight edge



WATERSTOPPER

INSTALLATION INSTRUCTIONS

Make sure the surface is clean and dry.

NOTE: Adhesion may be poor on surfaces (tile) treated with silicone based sealers. Test by peeling back about 1" of liner, press adhesive area to surface it will be installed on and leave overnight. Test adhesion by pushing sideways as shown.



If adhesion is satisfactory, pull straight up and proceed with the installation. If not, surface preparation or mechanical attachment will be necessary.

1



Clean surface with supplied alcohol wipe (MUST BE DRY)

2



Without removing adhesive liner, place endcap LEVEL at the curb edge and inside the shower front.

Note the distance from the front of the shower for second endcap.



Too High
NOT LIKE THIS



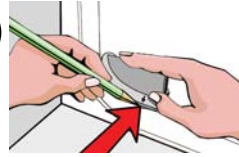
Too Low
NOT LIKE THIS

3



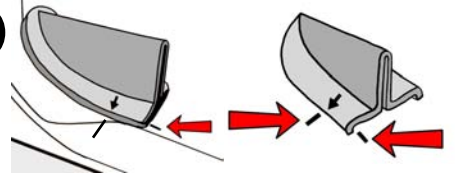
Draw the outline of the endcap on shower.

4



Mark on the floor at the embossed arrow.

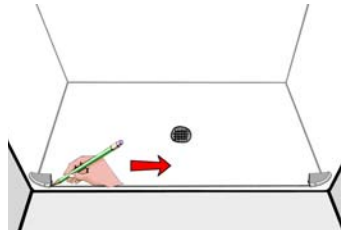
5



Mark on the floor at the edge of the underside indent at the open end of the endcap.

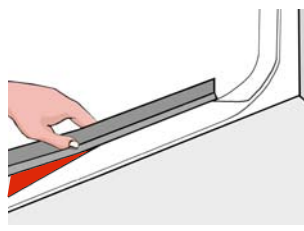
Repeat steps 2 through 5 with the second endcap at the other side of the shower

6



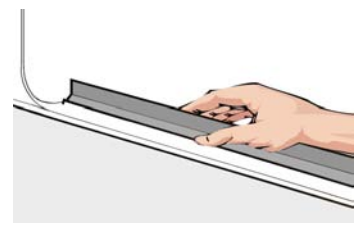
Draw a line with a straight edge that connects the two marks from step 6.

7



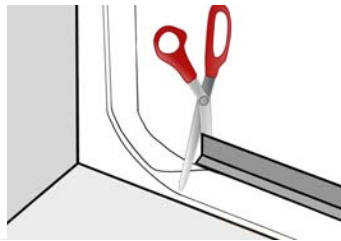
Peel off about 4 inches of the adhesive backing and stick the corner at the two intersecting marks.

8



Using the line as your guide, continue to peel the liner as you gently stretch the material and stick the WaterStopper along the line.

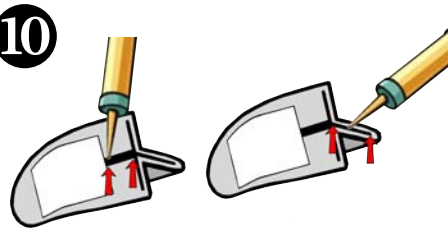
9



When you reach the arrow mark at the other end, cut off any excess material and firmly press the end to the floor.

Move along the length pressing firmly down on both sides of the WaterStopper.

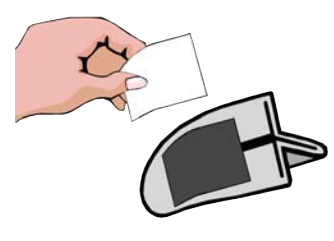
10



(OPTIONAL) Apply silicone sealant on 1/2 inch of each of the ends of the adhered WaterStopper.

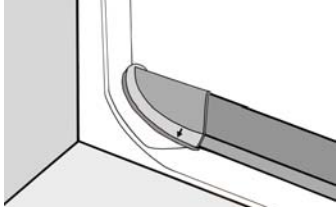
(OPTIONAL) Apply silicone sealant inside the endcaps at the shoulder, the bottom and the underside slot.

11



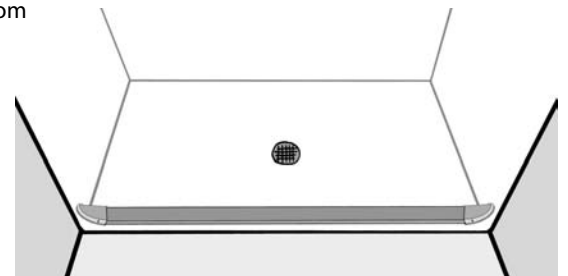
Peel the liner off the self-adhesive tape on the endcaps.

12



Stick the endcaps inside the the drawn outline. Make sure the upright rubber is slotted properly in the endcap.

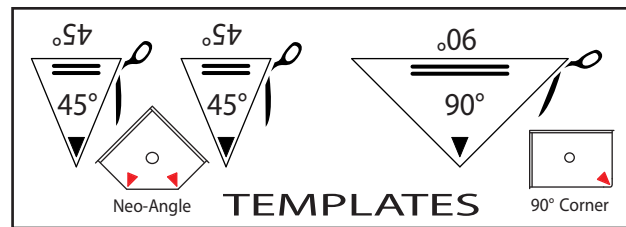
Wipe off any excess silicone sealant and pencil marks with the other alcohol wipe



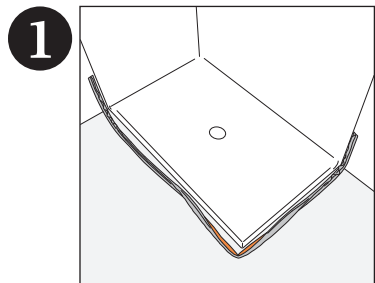
The WaterStopper used with a heavy duty, weighted shower curtain offers the best water retention system available.

CORNER INSTALLATION SUPPLEMENT

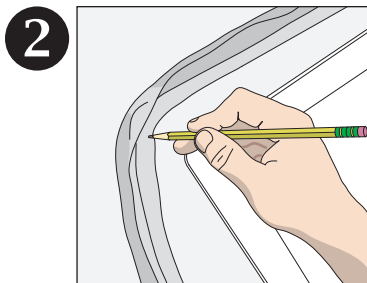
WATERSTOPPER



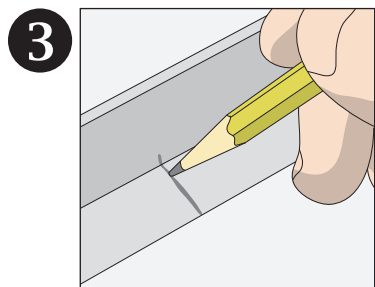
Refer to steps 1 through 6 on the WaterStopper Installation Instructions to begin



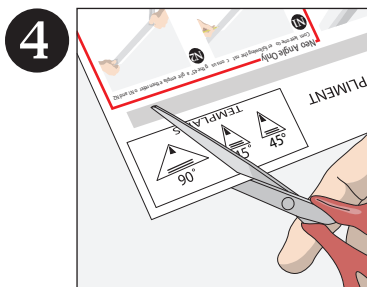
Lay the WaterStopper along the front of your shower leaving equal excess at each end.



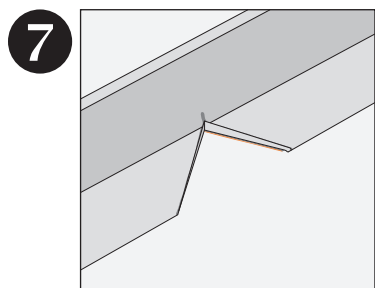
Mark the WaterStopper nearest the corner with a pencil.



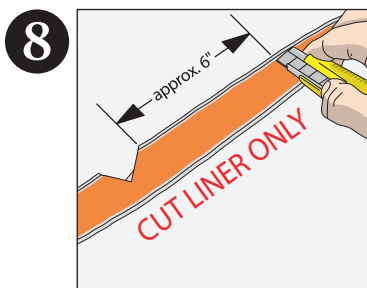
Extend your pencil mark up and onto the vertical surface.



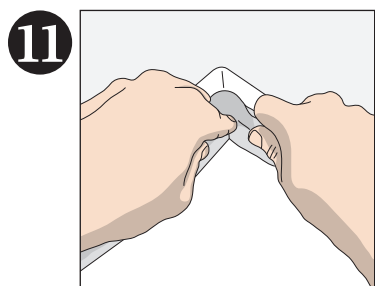
Cut out the template top-left corner of this page to match the angle of your shower.



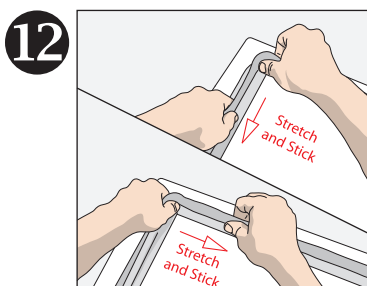
This is an example of a cut for a 90° corner shower.



Slice the liner about 6" on either side of the cut-out.
NOTE: DO NOT CUT THROUGH THE ADHESIVE STRIP OR THE RUBBER



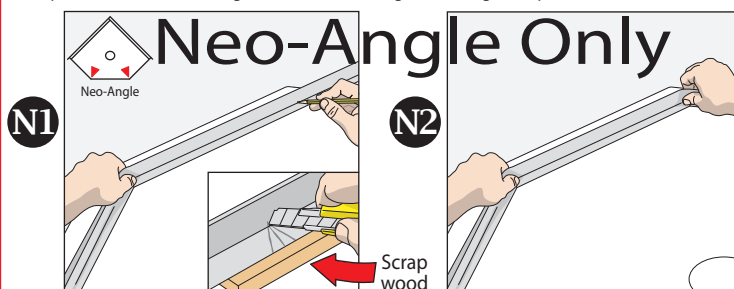
With one finger or thumb in the inside pit of the cut, press the WaterStopper down onto the shower.



With the center cut pressed down with one hand, use the other to stretch tight and stick the exposed section of the adhesive down to the corner of your shower.

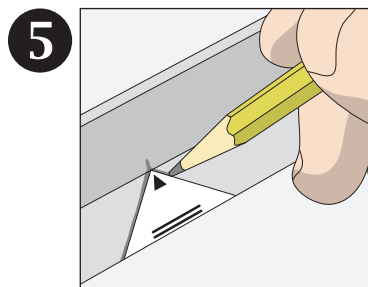
Neo-Angle Only

Complete one corner following the instructions using the 45° angle template then refer to N1 and N2

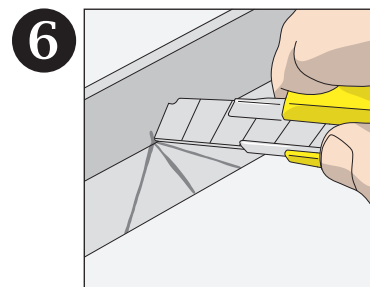


Follow steps 3 through 10, using a scrap piece of wood or other hard surface between the shower floor and the WaterStopper to make your cut. Remove liner between cuts.

Holding the first angle firmly, pull tight and stick second corner down while making sure the front is straight. Continue with step 12.



Your corner is finished. Continue with steps 9 through 11 on the reverse side to complete installation.



Your corner is finished. Continue with steps 9 through 11 on the reverse side to complete installation.